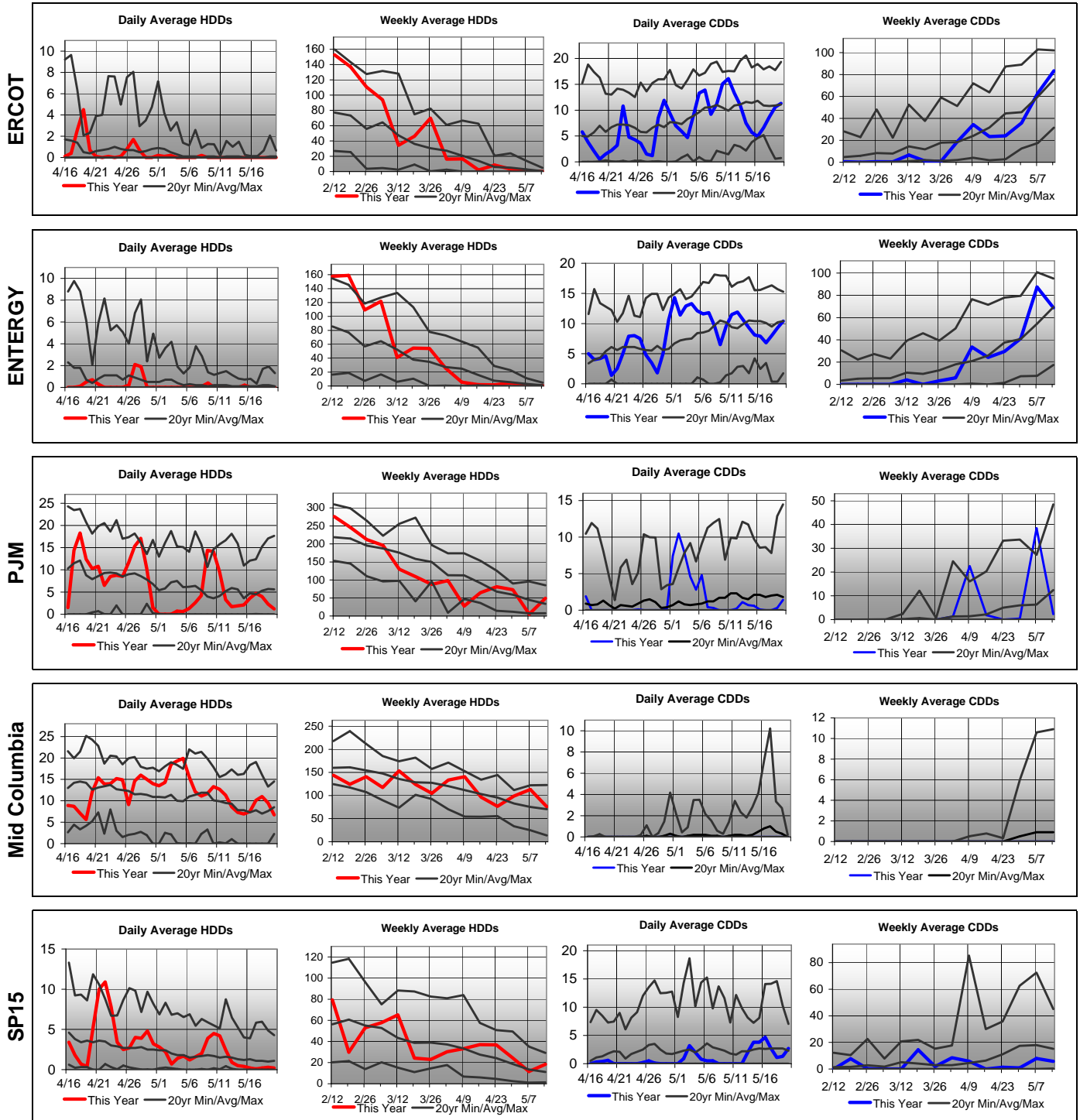




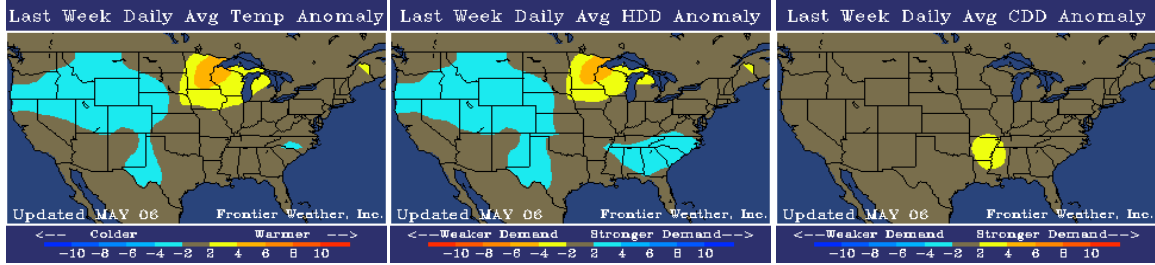
Power Region Temperature and Degree Day Summary

Updated: Thursday 5/6/2010

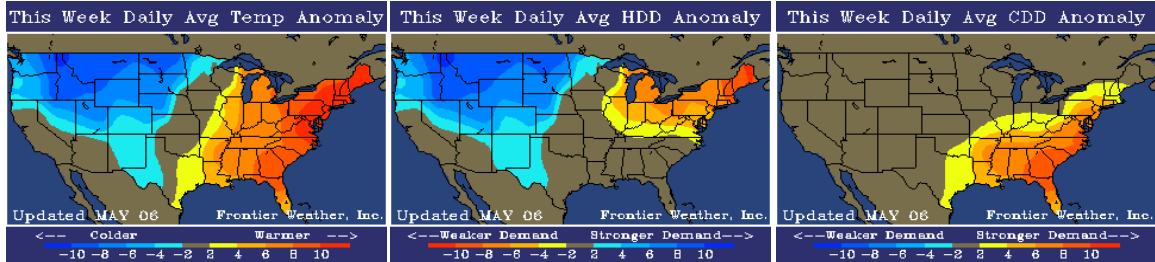
PowerRegion	Week Ending	AVG HIGH	AVG LOW	AVG AVG	HDDS							CDDS							
					Actual or Fcst	Anomaly (20 YR)	Previous Forecast	Forecast 1 Week Ago	10 YR AVG	20 YR AVG	30 YR AVG	Actual or Fcst	Anomaly (20 YR)	Previous Forecast	Forecast 1 Week Ago	10 YR AVG	20 YR AVG	30 YR AVG	
AEP Dayton Hub	Last Week	Fri 04/30/2010	65.9	46.0	56.0	67.3	0.0	67.3	66.0	68.8	67.3	67.1	4.0	-0.6	4.0	1.4	4.6	4.6	4.2
	This Week	Fri 05/07/2010	75.3	55.7	65.5	2.8	-47.3	2.9	35.2	41.0	50.1	54.3	6.5	1.3	7.0	8.8	8.7	5.2	4.3
	Next Week	Fri 05/14/2010	67.3	46.2	56.7	57.9	22.2	57.9	---	33.0	35.7	38.1	0.0	-12.6	1.8	---	12.5	12.6	11.6
Cinergy	Last Week	Fri 04/30/2010	67.4	48.2	57.8	55.5	-1.1	55.5	55.6	55.5	56.6	54.8	5.0	-1.9	5.0	3.7	7.7	6.9	7.1
	This Week	Fri 05/07/2010	76.6	57.3	66.9	2.0	-39.5	2.2	26.7	32.5	41.5	43.3	15.7	8.1	15.6	9.5	11.7	7.6	6.7
	Next Week	Fri 05/14/2010	69.0	48.5	58.7	46.1	17.5	44.9	---	26.7	28.6	29.9	2.2	-14.4	4.6	---	17.8	16.6	15.7
COB	Last Week	Fri 04/30/2010	61.4	40.3	50.9	99.0	30.5	99.0	101.0	66.8	68.5	72.5	0.0	-1.4	0.0	0.0	1.6	1.4	1.5
	This Week	Fri 05/07/2010	66.0	36.4	51.2	96.5	37.1	93.0	57.0	59.5	59.4	63.4	0.0	-3.1	0.0	0.0	1.0	3.1	3.4
	Next Week	Fri 05/14/2010	69.3	43.3	56.3	61.0	8.1	59.5	---	50.7	52.9	57.3	0.0	-4.1	0.0	---	2.7	4.1	4.3
Entergy	Last Week	Fri 04/30/2010	80.1	60.4	70.3	4.2	-1.3	4.2	4.2	3.9	5.5	5.1	41.2	0.5	41.2	39.3	43.5	40.7	41.0
	This Week	Fri 05/07/2010	85.9	69.0	77.5	0.0	-3.0	0.0	0.2	2.8	3.0	2.7	87.4	32.9	86.4	64.9	62.5	54.5	52.4
	Next Week	Fri 05/14/2010	83.4	66.2	74.8	0.5	-0.6	0.5	---	0.7	1.1	1.3	68.9	-0.5	71.4	---	76.7	69.4	64.8
Ercot	Last Week	Fri 04/30/2010	81.5	57.8	69.6	3.3	-1.8	3.3	3.3	3.7	5.1	4.5	35.8	-9.9	35.8	37.6	47.4	45.7	47.7
	This Week	Fri 05/07/2010	88.3	59.6	74.0	0.5	-2.3	0.5	0.2	2.2	2.8	2.2	63.1	3.2	62.8	55.3	67.7	59.9	58.2
	Next Week	Fri 05/14/2010	86.2	67.6	76.9	0.2	-0.3	0.1	---	0.3	0.5	0.8	83.4	7.8	81.7	---	80.2	75.6	71.1
Four Corners	Last Week	Fri 04/30/2010	61.6	35.8	48.6	114.5	19.3	114.5	112.9	87.3	95.2	90.2	0.0	-1.7	0.0	0.0	1.3	1.7	1.5
	This Week	Fri 05/07/2010	62.5	35.6	49.0	112.7	40.2	110.7	97.5	73.0	72.5	68.8	0.9	-1.9	0.2	0.3	4.3	2.8	2.9
	Next Week	Fri 05/14/2010	65.1	39.4	52.2	89.4	31.2	86.4	---	63.3	58.2	59.4	0.1	-5.5	0.1	---	6.1	5.6	5.2
FRCC	Last Week	Fri 04/30/2010	83.0	66.1	74.6	1.0	-0.5	1.0	0.9	1.1	1.5	1.4	68.1	-1.6	68.1	65.2	69.0	69.7	67.1
	This Week	Fri 05/07/2010	89.2	74.4	81.8	0.0	-0.4	0.0	0.0	0.1	0.4	0.2	117.5	36.1	113.3	94.8	81.2	81.4	78.1
	Next Week	Fri 05/14/2010	87.2	69.8	78.5	0.0	-0.2	0.0	---	0.0	0.2	0.1	94.5	2.8	98.9	---	92.3	91.7	84.4
Mead	Last Week	Fri 04/30/2010	75.6	53.4	64.5	29.1	9.8	29.1	33.6	14.0	19.3	22.2	25.5	-12.1	25.5	25.5	41.1	37.6	35.1
	This Week	Fri 05/07/2010	79.6	56.4	68.0	15.9	1.7	15.1	13.2	11.9	14.2	16.1	36.9	-14.1	39.4	45.3	56.6	51.0	49.3
	Next Week	Fri 05/14/2010	80.8	57.2	69.0	12.4	0.9	12.4	---	9.5	11.5	13.2	40.3	-24.9	41.5	---	70.9	65.2	59.1
Mid Columbia	Last Week	Fri 04/30/2010	58.3	43.4	50.9	98.8	15.9	98.8	101.1	83.3	82.9	84.8	0.0	-0.5	0.0	0.0	0.2	0.5	0.4
	This Week	Fri 05/07/2010	56.7	40.9	48.8	113.2	37.8	111.5	86.3	81.6	75.4	76.8	0.0	-0.9	0.0	0.0	0.1	0.9	1.0
	Next Week	Fri 05/14/2010	64.0	44.3	54.1	76.0	5.6	70.5	---	72.9	70.4	70.9	0.0	-0.9	0.0	---	0.1	0.9	1.2
MRO/MAPP	Last Week	Fri 04/30/2010	64.5	46.7	55.6	66.7	-30.0	66.7	68.0	92.3	96.7	91.1	0.9	-1.6	0.9	0.6	2.5	2.5	2.3
	This Week	Fri 05/07/2010	62.1	44.5	53.3	82.3	8.1	82.3	86.5	65.1	74.2	71.9	0.2	-3.4	0.2	0.0	4.6	3.6	3.8
	Next Week	Fri 05/14/2010	60.1	40.5	50.3	103.0	40.7	98.9	---	66.6	62.3	59.6	0.0	-6.2	0.0	---	5.5	6.2	6.5
NEPOOL	Last Week	Fri 04/30/2010	59.8	42.9	51.4	95.5	1.7	95.5	100.3	95.8	93.8	92.7	0.0	-1.9	0.0	0.0	2.5	1.9	1.8
	This Week	Fri 05/07/2010	77.6	55.3	66.5	8.2	-62.8	9.1	38.9	67.1	71.0	73.6	21.6	18.6	21.5	6.2	5.2	3.0	2.3
	Next Week	Fri 05/14/2010	62.7	44.3	53.5	80.2	17.0	72.2	---	61.1	63.2	64.9	0.0	-3.9	0.0	---	5.1	3.9	3.2
Northern Illinois	Last Week	Fri 04/30/2010	65.9	44.7	55.3	74.1	-12.5	74.1	70.2	85.5	86.6	85.7	6.1	2.6	6.1	1.7	1.1	3.5	3.1
	This Week	Fri 05/07/2010	69.5	51.1	60.3	32.8	-34.9	33.1	57.1	60.1	67.7	69.5	0.0	-3.9	0.0	0.5	6.5	3.9	4.1
	Next Week	Fri 05/14/2010	62.9	42.6	52.8	85.6	34.8	86.5	---	51.0	50.8	52.8	0.0	-9.2	0.0	---	9.3	9.2	8.9
NP15	Last Week	Fri 04/30/2010	66.2	48.1	57.1	55.6	13.6	55.6	57.8	47.9	42.0	44.6	0.3	-4.3	0.3	0.3	4.3	4.6	4.0
	This Week	Fri 05/07/2010	70.3	47.9	59.1	41.7	5.0	42.0	24.4	36.7	36.7	38.8	0.5	-4.5	0.5	2.9	4.6	5.0	5.3
	Next Week	Fri 05/14/2010	68.7	50.4	59.5	42.1	3.3	41.9	---	36.8	38.8	38.6	3.5	-2.8	3.4	---	6.4	6.3	6.7
NYISO	Last Week	Fri 04/30/2010	62.2	47.0	54.6	75.0	8.7	75.0	77.9	71.0	66.3	66.2	2.3	-0.7	2.3	0.0	4.0	3.0	2.5
	This Week	Fri 05/07/2010	79.6	58.7	69.1	8.0	-43.0	8.8	30.6	49.1	51.0	51.9	37.0	31.8	37.4	17.9	8.7	5.2	4.4
	Next Week	Fri 05/14/2010	65.4	48.9	57.2	54.7	15.1	47.8	---	37.0	39.6	41.9	0.0	-7.6	0.0	---	9.0	7.6	6.9
Palo Verde	Last Week	Fri 04/30/2010	84.2	58.5	71.3	4.1	2.5	4.1	3.8	0.2	1.6	2.8	48.5	-25.2	48.5	50.2	78.5	73.7	71.5
	This Week	Fri 05/07/2010	89.0	60.2	74.6	1.8	1.2	1.8	2.0	0.0	0.6	0.7	68.9	-18.5	68.2	67.8	90.7	87.4	87.5
	Next Week	Fri 05/14/2010	89.9	63.3	76.6	0.0	-0.2	0.0	---	0.0	0.2	0.2	81.2	-27.0	76.7	---	116.9	108.2	104.2
PJM West	Last Week	Fri 04/30/2010	64.9	44.3	54.6	73.0	13.9	73.0	72.7	63.5	59.1	59.4	0.4	-5.6	0.4	0.6	4.9	6.0	5.1
	This Week	Fri 05/07/2010	81.0	58.4	69.7	5.2	-39.4	4.1	28.4	42.9	44.6	46.6	38.4	32.1	38.2	20.6	9.3	6.3	6.6
	Next Week	Fri 05/14/2010	68.7	47.9	58.3	49.2	15.4	45.3	---	28.5	33.8	36.4	2.3	-10.1	5.7	---	16.0	12.4	11.3
Southern	Last Week	Fri 04/30/2010	74.3	54.1	64.2	20.0	2.1	20.0	19.0	16.1	17.9	15.6	14.6	-5.7	14.6	16.4	19.9	20.3	23.0
	This Week	Fri 05/07/2010	85.1	66.0	75.5	0.0	-8.1	0.0	1.9	6.4	8.1	7.2	73.8	42.3	73.0	43.0	34.1	31.5	29.8
	Next Week	Fri 05/14/2010	81.0	58.9	70.0	4.1	0.9	0.9	---	2.3	3.2	4.2	38.8	-6.3	45.3	---	48.4	45.1	41.4
SP15	Last Week	Fri 04/30/2010	69.4	53.8	61.6	24.5	5.7	24.5	28.2	21.5	18.8	18.1	0.8	-16.6	0.8	0.8	13.7	17.4	14.7
	This Week	Fri 05/07/2010	73.8	55.2	64.5	11.6	-1.9	12.1	7.1	14.3	13.5	12.1	7.9	-10.1	6.7	10.2	15.6	18.0	16.9
	Next Week	Fri 05/14/2010	71.8	54.6	63.2	18.4	7.3	16.4	---	10.6	11.1	11.6	5.8	-9.4	6.1	---	15.0	15.2	16.8
SPP	Last Week	Fri 04/30/2010	71.6	50.8	61.2	36.9	-5.0	36.9	36.0	35.4	41.9	37.1	10.3	-0.6	10.3	11.7	12.1	10.9	13.9
	This Week	Fri 05/07/2010	77.5	52.6	65.1	17.2	-11.2	16.6	23.9	23.8	28.4	26.5	17.7	0.1	17.6	7.0	23.0	17.6	17.0
	Next Week	Fri 05/14/2010	73.0	52.0	62.5	32.5	16.1	27.4	---	15.4	16.4	16.3	15.2	-12.5	16.2	---	31.8	27.7	27.4
TVA	Last Week	Fri 04/30/2010	67.6	48.9	58.2	54.9	7.3	54.9	55.0	49.3	47.6	46.1	7.5	-4.0	7.5	8.2	12.7	11.5	12.4
	This Week	Fri 05/07/2010	81.1	59.3	70.2	7.4	-27.9	7.0	22.0	31.6	35.3	35.9	43.9	28.8	43.0	20.8	19.6	15.1	13.9
	Next Week	Fri 05/14/2010	72.1	51.5	61.8	38.3	13.7	33.2	---	21.3	24.6	26.4	16.2	-7.7	18.0	---	27.6	23.9	22.8



Week Ending 4/30/2010 Comparison



Week Ending 5/7/2010 Comparison



Week Ending 5/14/2010 Comparison

